

# PRODIGAL SON

Ry Cooder (Live in Studio)

Page 1 of 2

**F#**  
Key

**TIKI NATION**  
SECRET UKE CLUB TUNEBOOK

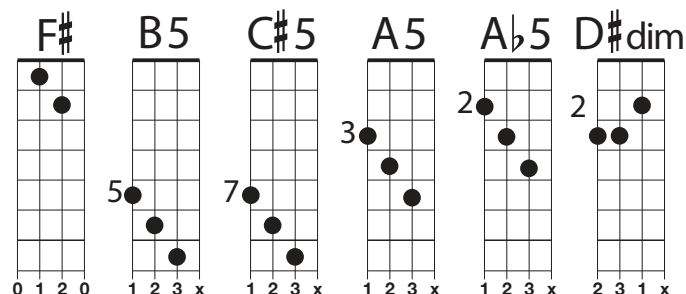
For Educational Purposes only. Not for Resale.

Tuning: **F# C E A**

**Intro:** |: **F# | F# | B5 | B5 :**|| x3 | **C#5 B5 A5 Ab5 | A5 Ab F# - |**

## Verse 1:

Now the **[F#]** prodigal son was a forward child,  
His mind was not to obey,  
But after he left, his father's house,  
He **[C#5]** thought he had **[B5]** gone **[A5]** a- **[F#]**stray  
- and that's why



## Chorus:

I be-**[F#]**lieve, I believe, I will go back home  
Yes, I be-**[B5]**lieve, I believe, I will go back home  
I be-**[F#]**lieve, I believe, I will go back home  
And **[C#5]** be **[B5]** the **[A5]** ser-**[Ab5]**vant **[A5]** of  
**[Ab5]** the **[F#]** Lord

## Verse 2:

Well his **[F#]** father saw him coming,  
And he **[B5]** met him with a smile,  
He **[F#]** threw his arms around him,  
He's saying "Now **[C#5]** that **[B5]** is my  
**[A5]** dar-**[Ab5]**ling **[A5]****[Ab5]****[F#]** child,  
- and that's why

## Chorus:

I be-**[F#]**lieve, I believe, I will go back home  
Yes, I be-**[B5]**lieve, I believe, I will go back home  
I be-**[F#]**lieve, I believe, I will go back home  
And **[C#5]** be **[B5]** the **[A5]** ser-**[Ab5]**vant **[A5]** of  
**[Ab5]** the **[F#]** Lord

## Instrumental Break:

| **F# | F# | B5 | B5 | F# | F# |**

## Verse 3:

Now the **[F#]** father asked the Prodigal Son,  
**[B5]** why you been gone so long?  
What **[F#]** made you so love the world  
And for-**[C#5]**get **[B5]** your **[A5]** hap-**[Ab5]**py  
**[Ab5]****[A5]****[F#]** home  
*The prodigal said:*

"I **[F#]** really searched for true religion, but  
**[B5]** No faith and no peace could I find  
**[F#]** Until I came to a little place called Bakersfield  
That-a **[C#5]** eased **[B5]** my **[A5]** troub-**[Ab5]**l'in  
**[A5]****[Ab5]****[F#]** mind"

# PRODIGAL SON

Ry Cooder (Live in Studio)

Page 2 of 2

**F#**  
Key

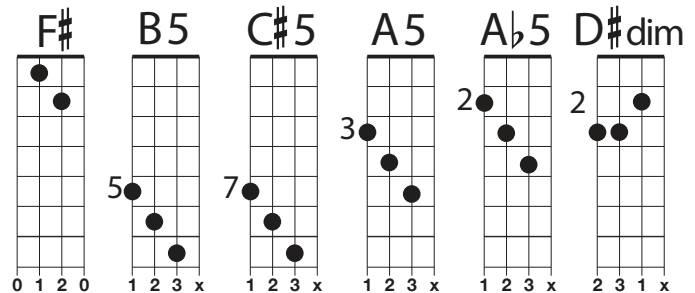
**TIKI NATION**  
SECRET UKE CLUB TUNEBOOK

For Educational Purposes only. Not for Resale.

Tuning: F# C E A

## Chorus:

I be-[F#]lieve , I believe, I will go back home  
Yes, I be-[B5]lieve, I believe, I will go back home  
I be-[F#]lieve, I believe, I will go back home  
And [C#5] be [B5] the [A5] ser-[Ab5]vant  
[A5] of [Ab5] the [F#] Lord



## Verse 4:

I [F#] wandered into a tavern  
Where a [B5] music band was playing  
[F#] Where, the steel guitar rang out so sweet-ta  
I [B5] feel that I was prayin'  
And I [F#] asked a comely waitress:  
"Hey Baby..uh" "Is [B5] this a new teaching?"

She said, "there [F#] is no God but God  
And Ralph [C#5] Moo-[B5]ney [A5] is [Ab5] his  
[A5][Ab5][F#] name"

I said, [F#] "Let me empty your ashtray, Mr. Mooney  
Oh, [B5] and if the drunks interfere I'll be sad  
But just as [F#] long as you sit there  
on the bandstand and play guitar like [C#5] Buddha,  
[B5][A5] I'll [Ab5] be [A5][Ab5][F#] glad!"

## Instrumental Break:

| F# | F# | B5 | B5 | F# | F# | C#5 B5 A5 Ab5 | A5 Ab F# - |

## Chorus:

I be-[F#]lieve , I believe, I will go back home  
Yes, I be-[B5]lieve, I believe, I will go back home  
Oh [F#] Lord, have mercy!  
And [C#5] be [B5] a [A5]ser-[Ab5]vant [A]  
of [Ab5] the [F#] Lord

## Instrumental Break:

||: F# | F# | B5 | B5 | F# | F# | C#5 B5 A5 Ab5 | A5 Ab F# - :|| x2

## Instrumental Break: [Bring it down]

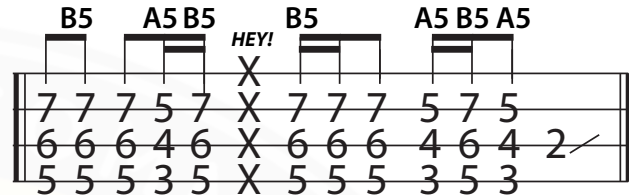
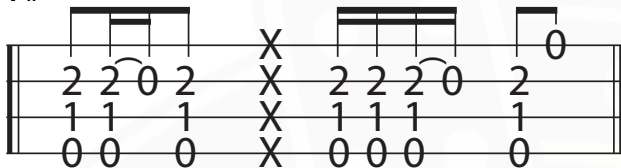
| F# | F# | B5 | B5 | F# | F# |  
| F# | F# | B5 | B5 | F# | F# |

I be-[F#]lieve , I believe I will go back home  
I be-[B5]lieve, I believe I will go back home  
I be-[F#]lieve, I believe that I will go back home  
And [C#5] be the ser-vant... [C#5] ...of  
[D#dim]...the [F#] Lord

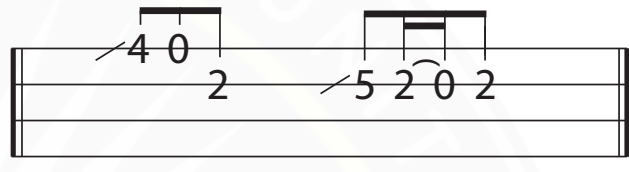
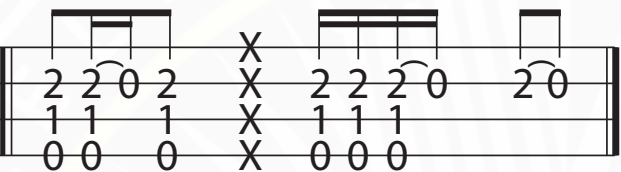
# PRODIGAL SON

## INTRO TAB

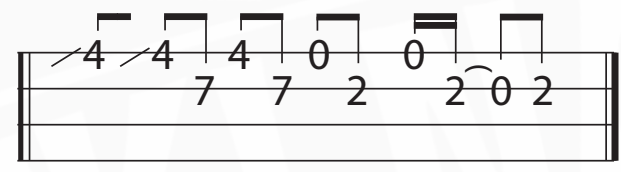
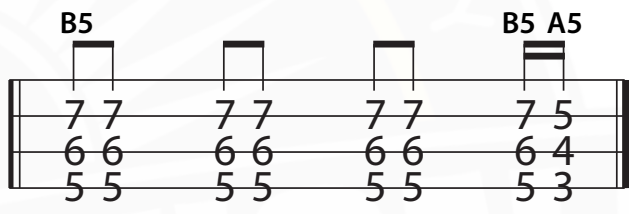
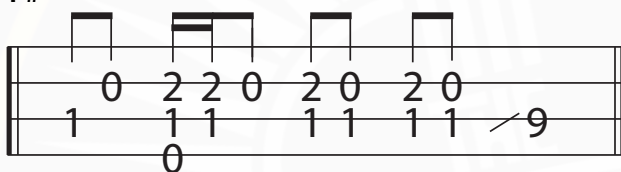
F#



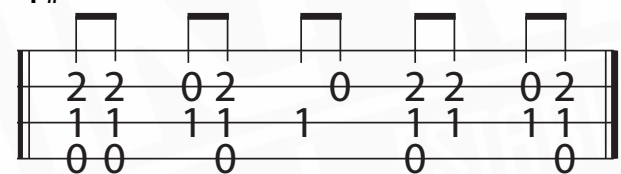
F#



F#



F#



# Prodi gal SON - Ry Cooder (LIVE IN STUDIO)

ARR. by KEV  
FOR LOW G UKULELE  
F# C E A

U  
K  
E  
B

## PRODIGAL SON - ENDING

C#5

C#5

AND <sup>9</sup>/<sub>8</sub> BE THE SER-VANT <sup>9</sup>/<sub>8</sub> OF ...

D#dim

F#

F#

<sup>2</sup>/<sub>3</sub> THE... <sup>2</sup>/<sub>1</sub> LORD <sup>2</sup>/<sub>0</sub> <sup>2</sup>/<sub>0</sub> <sup>2</sup>/<sub>5</sub> <sup>2</sup>/<sub>3</sub> <sup>2</sup>/<sub>0</sub> <sup>2</sup>/<sub>0</sub>