

LIGHTS

Journey



TIKI NATION
SECRET UKE CLUB TUNEBOOK

For Educational Purposes only. Not for Resale.

Intro: | D Bm | D A | Bm C* | D |

Chorus:

When the [D] lights go [Bm] down in the [C] City [C]
And the [D] sun shines [Bm] on the [C] bay [C]
Do I [D] want be [Bm] there in my [C] city?
[C] Oh oh, whoa
[Bm] Oh-o [C*] oh [D] Oh-O-oh

Verse:

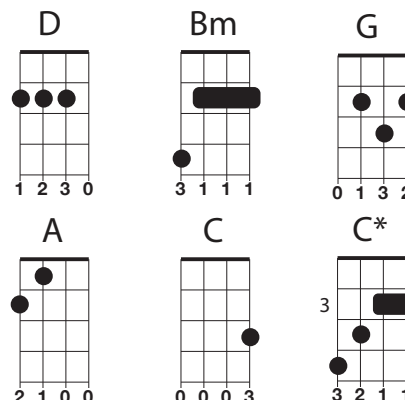
[D] So you [Bm] think you're [C] lonely [C]
[D] Well, my [Bm] friend, I'm [C] lonely too [C]
[D] I want to get [Bm] back to my
[C] city by the [C] bay
[Bm] Whoa [C*] oh [D] Oh-O-oh

Bridge:

It's [Bm] sad, [G] oh, there's been
[D] mornings [D] out on the road
[Bm] without you [G] Without your
[D] char-ar-ar[A]rms [Bm] Oh-o-oh
[G] Who-o-oh, my, [D] my, my, [D] my, my,
[Bm] Whoa- [C*]oh [D] oh-oh-o

Chorus:

When the [D] lights go [Bm] down in the [C] City [C]
And the [D] sun shines [Bm] on the [C] bay [C]
Do I [D] want be [Bm] there in my [C] city? [C]
oh oh, whoa
[Bm] Oh-o [C*] oh [D] Oh-O-oh



Solo:

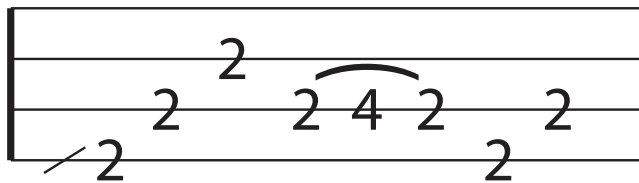
| Bm G | D | Bm G | D A |
| Bm G | D | Bm C* | D |

Chorus:

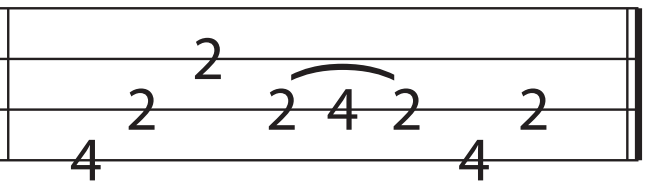
When the [D] lights go [Bm] down in the [C] City [C]
And the [D] sun shines [Bm] on the [C] bay [C]
Do I [D] want be [Bm] there in my [C] city? [C] Oh oh oh,
[Bm] whoa-oo [C*] Oh [D] Oh-Oh-o
[Bm] whoa-oo [C*] Oh [D] Oh-Oh-o

LIGHTS BY JOURNEY INTRO SOLO

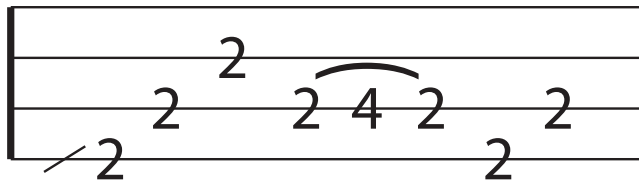
D



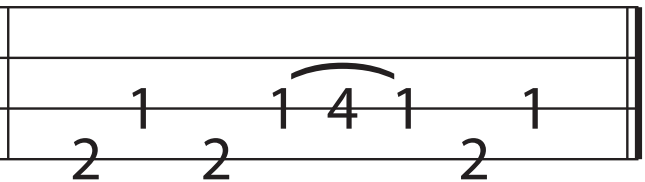
Bm



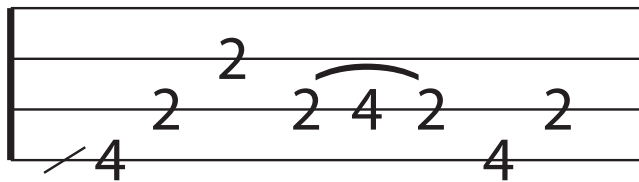
D



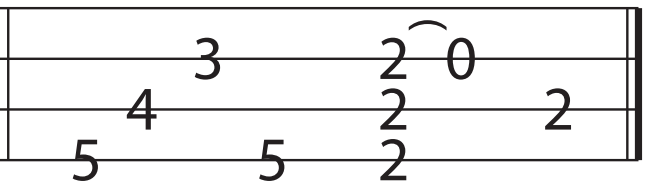
A



Bm



C



D